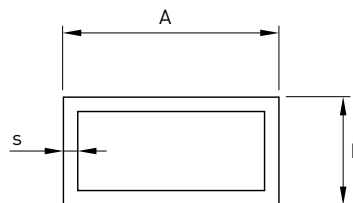
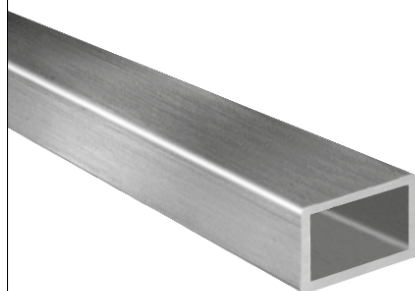


# Tubo rettangolare

Norme: EN10296

Materiale: Aisi 304L EN 1.4307 - Aisi 316L EN 1.4304

cod. 004



A mm	B mm	Stock		Peso kg/m	
		spessore (S)		spessore (S)	
		2,00 mm	3,00 mm	2,00 mm	3,00 mm
30	15	R	N	1,34	-
	20	R	N	1,49	-
40	15	R	N	1,65	-
	20	R	R	1,81	2,65
	30	R	R	2,13	3,12
50	20	R	N	2,13	-
	25	R	N	2,29	-
	30	R	R	2,45	3,60
	40	R	R	2,77	4,08
60	20	R	N	2,45	-
	30	R	R	2,77	4,08
	40	R	R	3,09	4,56
70	30	R	R	3,09	4,56
80	20	R	N	3,09	-
	40	R	R	3,73	5,52
	60	R	R	4,37	6,47
100	20	R	N	3,73	-
	40	R	R	4,37	6,47
	50	R	R	4,68	6,95
	60	R	R	5,00	7,43
120	40	R	R	5,00	7,43
	60	R	R	5,64	8,39
	80	R	R	6,28	9,34
140	80	R	R	6,92	10,30
150	50	R	R	6,28	9,34
	100	R	R	7,87	11,74
160	80	R	R	7,56	11,26
200	100	N	R	9,47	14,13
	150	N	R	-	16,52