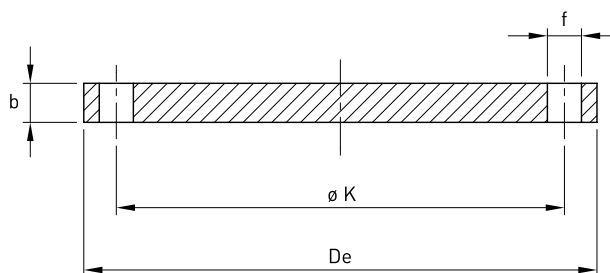


# Flangia cieca PN16

Norme: EN1092-1 TYPE 05A

Materiale: Aisi 304 EN 1.4301 - Aisi 316 EN 1.4401 - Aisi 304L EN 1.4307 - Aisi 316L EN 1.4404

cod. 340



DN	DN inch	Flangia mm			Foratura			Stock	Peso kg
		ø K	De	b	f mm	Vite	Fori		
15	1/2"	65	95	16	14	M12	4	D	0,813
20	3/4"	75	105	18	14	M12	4	D	1,140
25	1"	85	115	18	14	M12	4	D	1,380
32	1 1/4"	100	140	18	18	M16	4	D	2,030
40	1 1/2"	110	150	18	18	M16	4	D	2,350
50	2"	125	165	18	18	M16	4	D	2,880
65	2 1/2"	145	185	18	18	M16	4	D	3,643
80	3"	160	200	20	18	M16	8	D	4,610
100	4"	180	220	20	18	M16	8	D	5,650
125	5"	210	250	22	18	M16	8	D	8,130
150	6"	240	285	22	22	M20	8	D	10,500
200	8"	295	340	24	24	M20	12	D	16,200
250	10"	355	405	26	26	M24	12	D	25,000
300	12"	410	460	28	26	M24	12	D	35,100
350	14"	470	520	30	26	M24	16	D	48,000
400	16"	525	580	32	30	M27	16	D	63,500
450	18"	585	640	40	30	M27	20	D	96,600
500	20"	650	715	44	33	M30	20	D	133,000
600	24"	770	840	54	36	M33	20	R	226,000
700	28"	840	910	58	36	M33	24	R	236,000
800	32"	950	1025	62	39	M36	24	R	325,000
900	36"	1050	1125	64	39	M36	28	R	437,000
1000	40"	1170	1255	68	42	M39	28	R	602,000