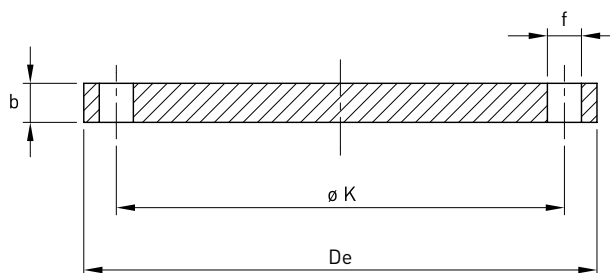


Flangia cieca PN6

Norme: EN1092-1 TYPE 05A

Materiale: Aisi 304 EN 1.4301 - Aisi 316 EN 1.4401 - Aisi 304L EN 1.4307 - Aisi 316L EN 1.4404

cod. 341



DN	DN inch	Flangia mm			Foratura			Stock	Peso kg
		ø K	De	b	f mm	Vite	Fori		
15	1/2"	55	80	12	11	M10	4	D	0,438
20	3/4"	65	90	14	11	M10	4	D	0,657
25	1"	75	100	14	11	M10	4	D	0,821
32	1 1/4"	90	120	14	14	M12	4	D	1,180
40	1 1/2"	100	130	14	14	M12	4	D	1,390
50	2"	110	140	14	14	M12	4	D	1,620
65	2 1/2"	130	160	14	14	M12	4	D	2,140
80	3"	150	190	16	18	M16	4	D	3,430
100	4"	170	210	16	18	M16	4	D	4,220
125	5"	200	240	18	18	M16	8	D	6,100
150	6"	225	265	18	18	M16	8	D	7,510
200	8"	280	320	20	18	M16	8	D	12,300
250	10"	335	375	22	18	M16	12	D	18,500
300	12"	395	440	22	22	M20	12	D	25,500
350	14"	445	490	22	22	M20	12	D	31,800
400	16"	495	540	22	22	M20	16	D	38,500
450	18"	550	595	24	22	M20	16	R	47,000
500	20"	600	645	24	22	M20	20	R	60,100
600	24"	705	755	30	26	M24	20	R	103,000
700	28"	810	860	40	26	M24	24	R	178,000
800	32"	920	975	44	30	M27	24	R	252,000
900	36"	1020	1075	48	30	M27	24	R	336,000