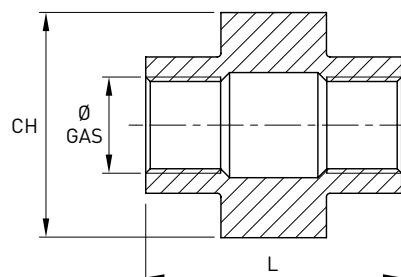


# Bocchettone microfuso F/F sede conica - Fig. 340

Norme: ISO 228/1 GAS Cilindrico X ISO 228/1 GAS Cilindrico

Materiale: Aisi 316 EN 1.4401

cod. 406



DN	Ø GAS inch	CH mm	L mm	Stock
5	1/8"	26	31	D
8	1/4"	27,3	34	D
10	3/8"	32,2	37	D
15	1/2"	37,1	40	D
20	3/4"	46	43	D
25	1"	52	50,5	D
32	1 1/4"	65	54,5	D
40	1 1/2"	70	58	D
50	2"	84,5	65,5	D
65	2 1/2"	108,5	75	D
80	3"	117	83,5	R
100	4"	143	111	R