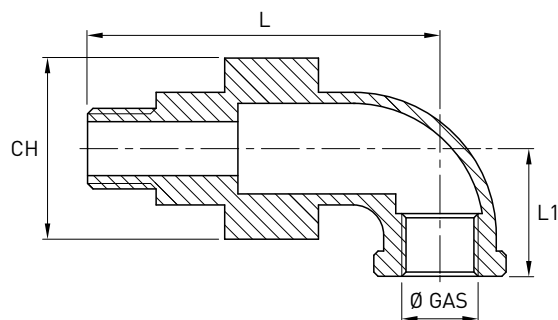


Bocchettone curvo microfuso 90 gradi M/F sede conica - Fig. 98

Norme: ISO 7/1 GAS Conico X ISO 228/1 GAS Cilindrico

Materiale: Aisi 316 EN 1.4401

cod. 419



DN	Ø GAS inch	CH mm	L mm	L1 mm	Stock
15	1/2"	37,1	70,5	27	D
20	3/4"	46	66,5	31	D
25	1"	52	88,5	36	D
32	1 1/4"	65	98,5	42	D
40	1 1/2"	70	103,5	46	D
50	2"	84,5	121	56	D