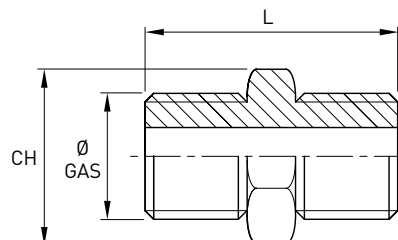


# Niplo tornito

Norme: ISO 228/1 GAS Cilindrico

Materiale: Aisi 304L EN 1.4307 – AISI 316L EN 1.4404

cod. 420



DN	Ø GAS inch	CH mm	L mm	Stock
8	1/4"	17	28	R
10	3/8"	19	32	R
15	1/2"	24	35	R
20	3/4"	30	40	R
25	1"	36	45	R
32	1 1/4"	46	48	R
40	1 1/2"	50	50	R
50	2"	65	58	R