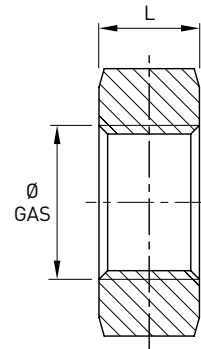


Controdado microfuso - Fig. 310

Norme: ISO 338 GAS Cilindrico
Materiale: Aisi 316 EN 1.4401

cod. 429



DN	Ø GAS inch	L mm	Stock
5	1/8"	7	D
8	1/4"	7	D
10	3/8"	7,5	D
15	1/2"	8,5	D
20	3/4"	11	D
25	1"	12	D
32	1 1/4"	13	D
40	1 1/2"	13	D
50	2"	15	D
65	2 1/2"	17	D
80	3"	21	R
100	4"	22	R