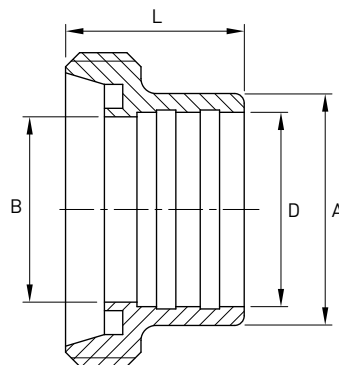


Femmina a mandrinare

Norme: DIN 11852

Materiale: Aisi 304L EN 1.4307 – Aisi 316L – EN 1.4404

cod. 521



| DN | Tubo De mm | D mm | B mm | A mm | L mm | Stock |
|-----|------------|-------|------|------|------|-------|
| 15 | 18 | 18,2 | 16 | 24 | 21 | D |
| 20 | 22 | 22,2 | 20 | 30 | 24 | D |
| 25 | 28 | 28,3 | 26,5 | 35 | 29 | D |
| 32 | 34 | 34,3 | 32,5 | 41 | 32 | D |
| 40 | 40 | 40,3 | 38,5 | 48 | 33 | D |
| 50 | 52 | 52,3 | 50,5 | 61 | 35 | D |
| 65 | 70 | 70,35 | 67,1 | 79 | 40 | D |
| 80 | 85 | 85,35 | 81,7 | 93 | 45 | D |
| 100 | 101,6 | 102 | 98,5 | 114 | 54 | D |