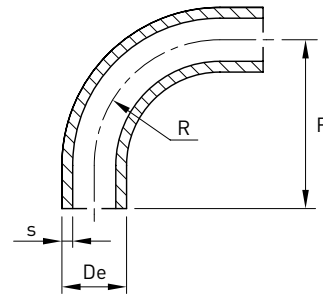


Curva a mandrinare 90°

Norme: DIN 11852

Materiale: Aisi 304L EN 1.4307 – Aisi 316L – EN 1.4404

cod. 540



DN	De mm	R mm	F mm	s mm	Stock
15	18	35	47	1,5	R
20	22	40	52	1,5	R
25	28	50	70	1,5	R
32	34	55	80	1,5	R
40	40	60	85	1,5	R
50	52	70	97	1,5	R
65	70	80	110	2	R
80	85	90	118	2	R
100	101,6	110	150	2	R