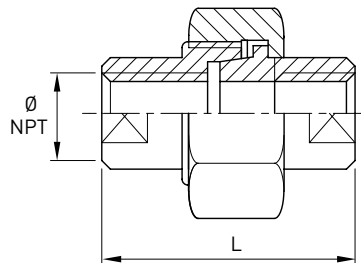


# Bocchettone F/F serie 3000 NPT (F/F union)

Norme: ANSI B16.11 - ASME B1.20.1

Materiale: Aisi 316L EN 1.4404

cod. 470



DN	Ø NPT inch	D mm	L mm	Stock
15	1/2"	21,34	52	R
20	3/4"	26,7	57	R
25	1"	33,4	63	R
32	1 1/4"	42,16	68	R
40	1 1/2"	48,26	78	R
50	2"	60,3	91	R